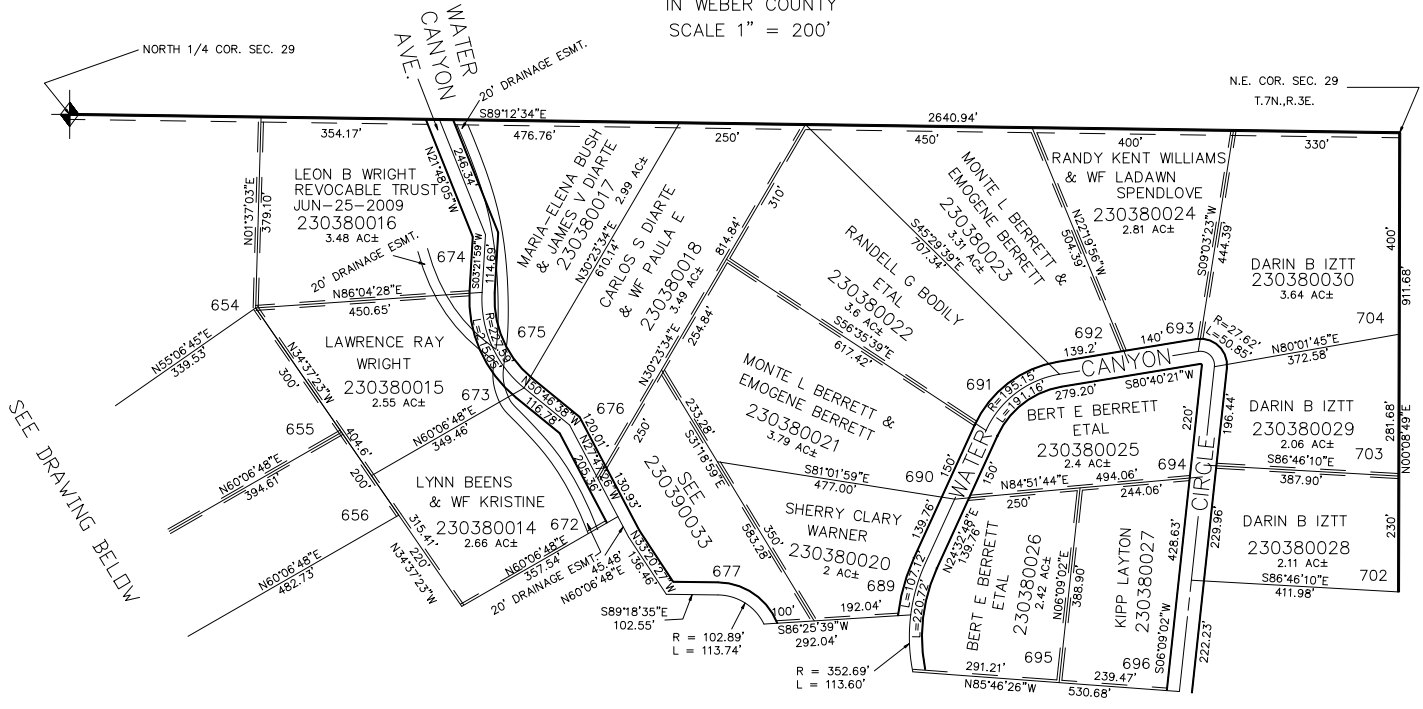


TAXING UNIT: 58

# PART OF SEC. 29, T.7N., R.3E., S.L.B. & M. EVERGREEN PARK SUBDIVISION NO. 1

LOTS 551-552, 599-602, 650-656, 672-677, 689-696, 702-704  
IN WEBER COUNTY  
SCALE 1" = 200'

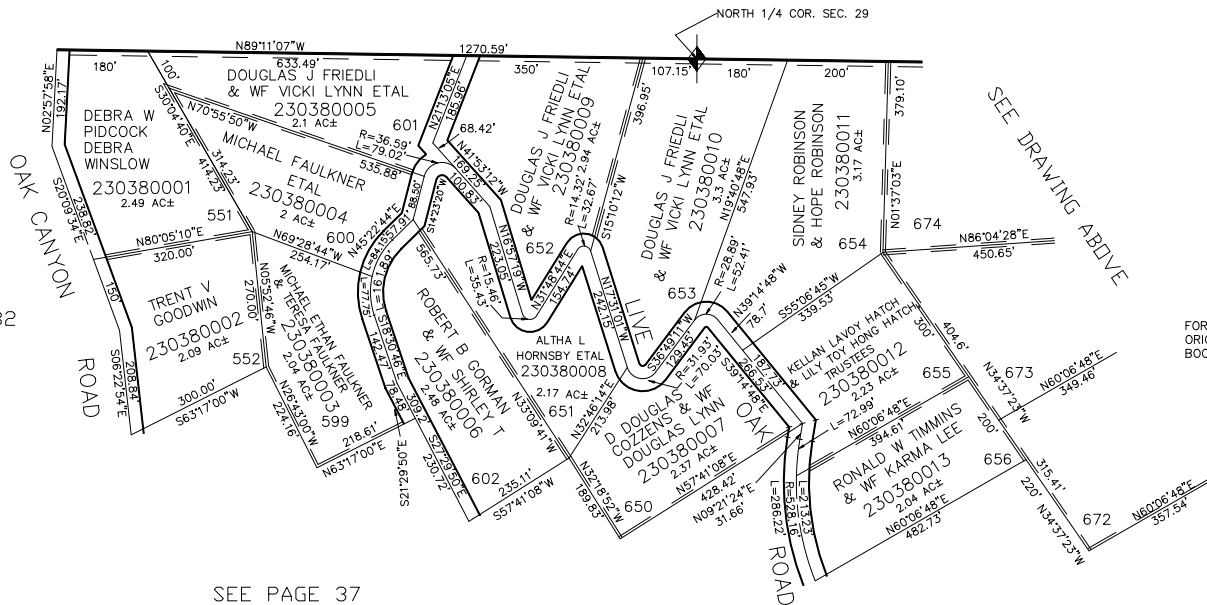


SEE PAGE 39

ALL DASHED LINES SHOWN  
ON LOT LINES ARE 10' UTILITY  
EASMENTS UNLESS OTHERWISE NOTED.

ALL ROADS ARE  
PRIVATE R.O.W.'S

SEE PAGE 32



SEE PAGE 37

FOR COMPLETE ENG DATA SEE  
ORIGINAL DEDICATION PLAT IN  
BOOK 13, PAGE 56 OF RECORDS.